

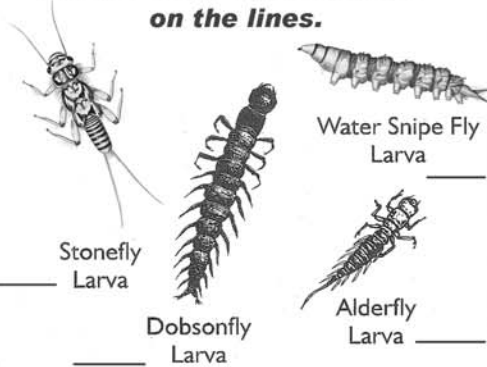
Macroinvertebrate Tally

Name of Collector _____

Location _____ Date of Collection _____

GROUP 1 - Sensitive to pollutants

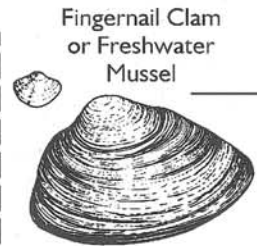
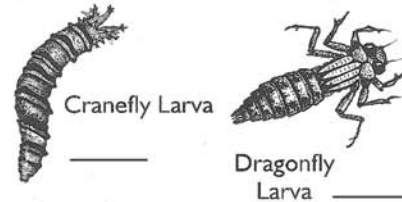
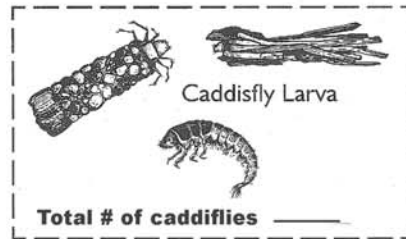
Record the # of individuals on the lines.



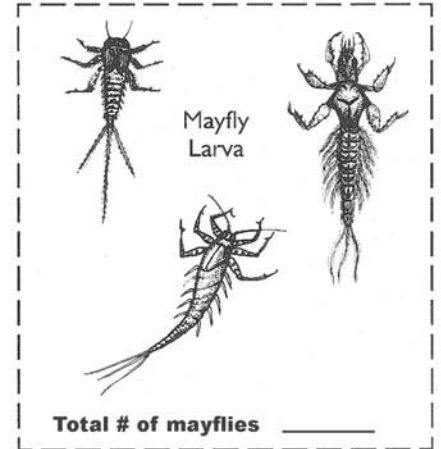
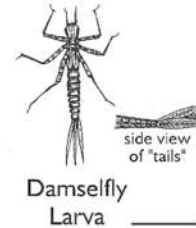
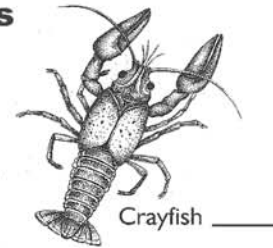
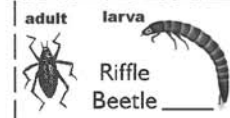
Total # of GROUP 1 animals found:

GROUP 2 - Semi-Sensitive to pollutants

Record the number of individuals on the lines.



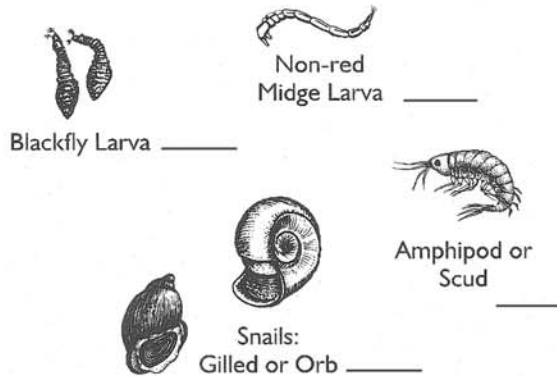
Water Penny Larva _____



Total # of GROUP 2 animals found:

GROUP 3 - Semi-Tolerant of pollutants

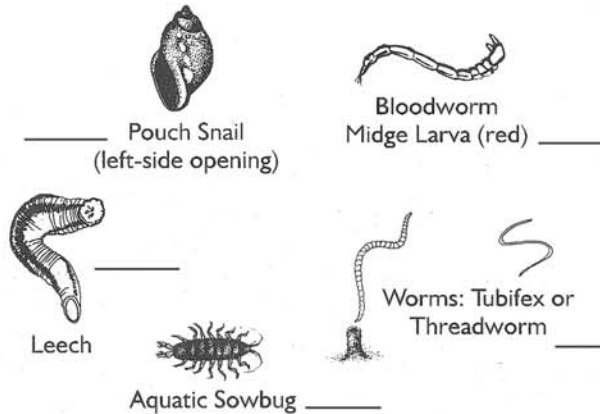
Record the # of individuals on the lines.



Total # of GROUP 3 animals found:

GROUP 4 - Tolerant of pollutants

Record the # of individuals on the lines.



Total # of GROUP 4 animals found:

Record the totals from each category box. Then complete the calculations.

Group 1 Sensitive _____ x 4 = _____

Group 2 Semi-Sensitive _____ x 3 = _____

Group 3 Semi-Tolerant _____ x 2 = _____

Group 4 Tolerant _____ x 1 = _____

Total _____ (E) _____ (F)

Divide (F) by (E): _____ ÷ _____

Index Score (F ÷ E)

How healthy is the stream?

3.6 and up Excellent
 2.6 - 3.5 Good
 2.1 - 2.5 Fair
 1.0 - 2.0 Poor