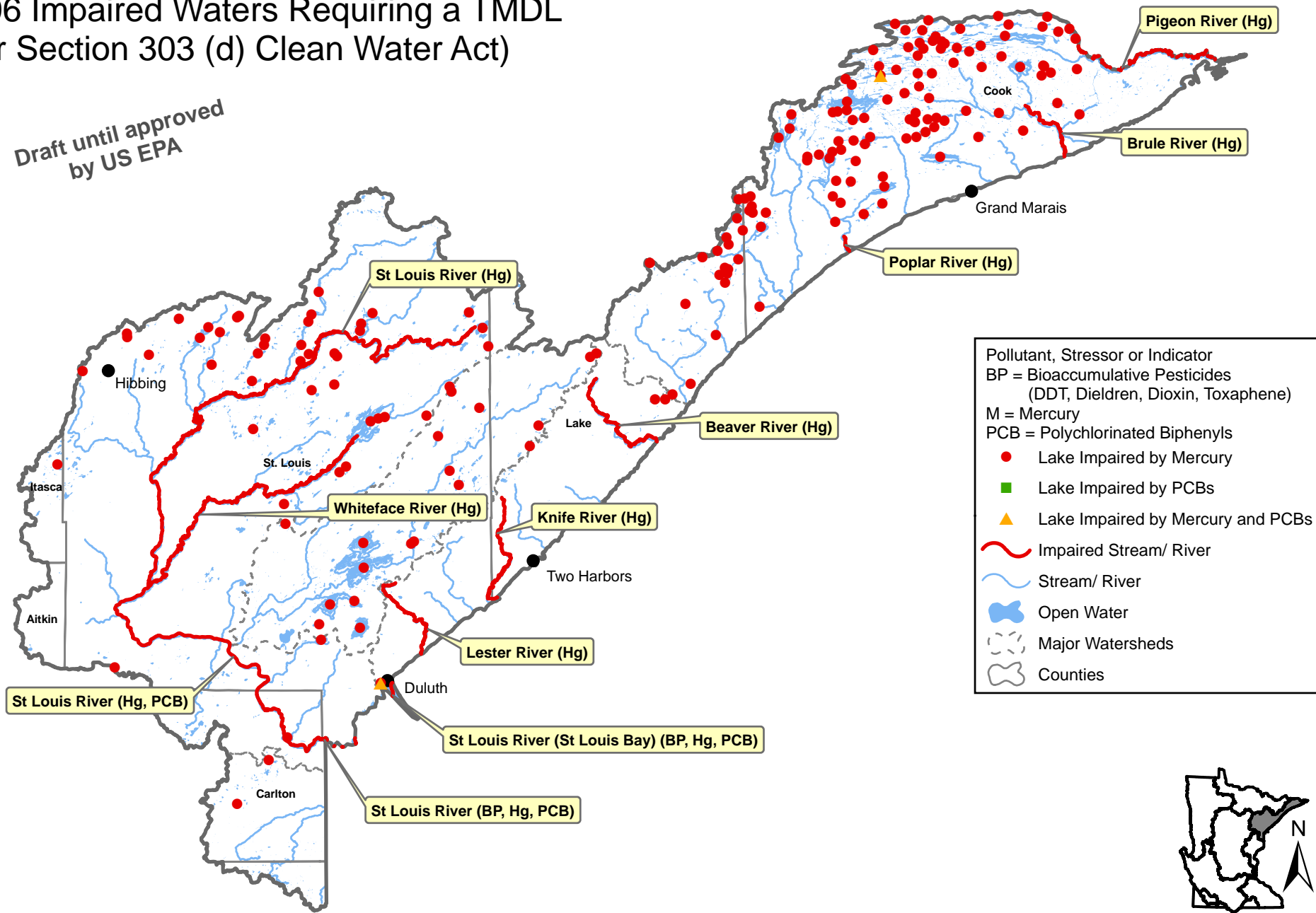


# Lake Superior Basin: Bioaccumulative Toxics

2006 Impaired Waters Requiring a TMDL  
(per Section 303 (d) Clean Water Act)

Draft until approved  
by US EPA



For additional information concerning impairments, such as station information and monitoring data, see the MPCA Environmental Data Access System. <http://www.pca.state.mn.us/data/edaWater>

